

Real-time Equipment Operation Management System

P@t net

Production equipment operation status can be seen anywhere, anytime, all in real-time!



kyoritsu System Machine LTD.

<http://www.kyoritsu-s.co.jp/eng/>



Provide awareness and knowledge of factory equipment operational status in real-time from anywhere.

By installing the real-time equipment operation control system, “P@t net” , operation hours, production amounts, and preparation time are monitored, and any anomalies can be detected, automatically.

Benefits



Equipment utilization rate can be calculated precisely.

Accurate and complete visualization of equipment working status is collected automatically through centralized management. Data is color-coded to allow prompt detection of any anomalies and rapid response during preparation time, helping improve efficiency.



Collection of production quantity data is available in real-time.

A rapid understanding of progress can be achieved through the automatic collection of individual equipment data. The latest production status, hourly production volume, and performance comparisons, can be seen using a customized Andon display.



Precise understanding of preparation time.

Equipment downtime can be digitally calculated and analyzed, helping achieve higher efficiency and reducing cost. .



Daily and monthly reports collected and calculated automatically.

Information can be easily calculated automatically and accurately. This is used to make daily/monthly reports which improve operation efficiency by minimizing human error and operator incidents. These reports may be exported as CSV files. Using Excel or similar calculation software, graphs, tables, and other formats can be exported.



Global support in multiple languages.

For companies that want to visualize and monitor their overseas industries in parallel with domestic factories, we provide multiple language system support, e.g., English and simplified Chinese. Just install the system to your local PC and it automatically operates in multiple languages allowing overseas and domestic staff to collaborate in real-time.

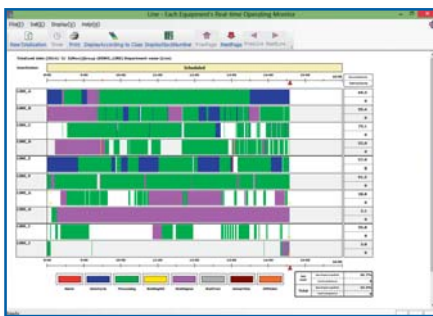
All system and production equipment supported.

- Build-to-order types (numerous small to mid-sized product lots), e.g., mould, trial production, press, etc.
- Unnecessary to have an installation apparatus and mounting location, e.g., machining, lathe, grinder, press, moulding machine, general purpose machine
- Made-to-stock manufacturing types (numerous small types of product lots), e.g., mechanical parts, moulding article, press, etc
- Assembly line assist and support using a system carefully selected to suit the customer.
- Low introductory costs.

P@t net

Basic screen and report

Real-time Operations Monitor



Real-time operations monitor

By displaying the operational status of equipment for each production line using optional names, colors, and arrows, conditions can be easily monitored in real-time.



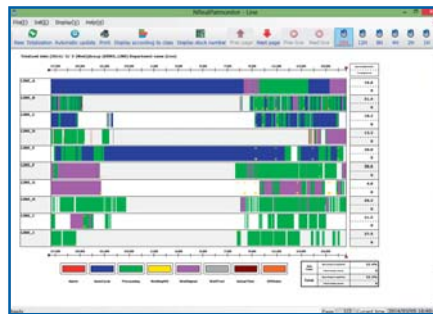
Daily operations monitor

Selecting by date, shift, or production line, allows the operational status of equipment to be displayed in various forms, e.g., previous day - current day - next day, or vice versa.



Monthly operations monitor

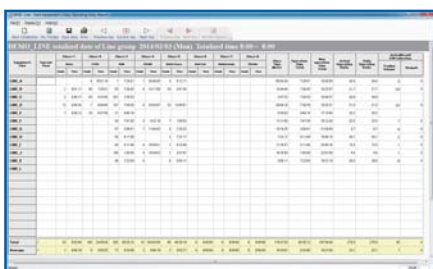
Selecting a time period, shift, or equipment allows the operational status to be seen, as well as data from previous and next equipment.



Prior operations monitor

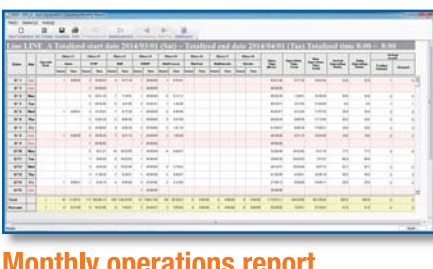
The operations status for up to 24 hours prior can be graphically displayed in real-time.

Daily and Monthly Operations Reports in Real-time



Daily operations report

Production line's operational status for a selected date can be seen both on-screen and in printed form. Switching to the monthly report screen allows data for that period to be analyzed as well.



Monthly operations report

Selecting a time period, shift, or equipment allows the operational status to be seen, as well as data from previous and next equipment.

Example of Custom Set

LINE A	ASV	LINE B	QBX4353
Timer Stop		Waiting Material	
Plan	1,000	Plan	1,000
Current	759	Current	9
Actual	840	Actual	5
Progress	81	Progress	-4
1,000		1,000	
840			
LINE C	QBX1203Q	LINE D	ST452041
Auto Cycle		Abnormal stop	
Plan	500	Plan	800
Current	8	Current	7
Actual	1	Actual	10
Progress	-7	Progress	3
500		800	

Multi-Andon(optional)

Displaying production progress multi-andon (optional)

Displays on a computer monitor in real-time the performance progress and status of each production line, up to 20 simultaneously. These results can then be shown on a large screen in-office or on-site for everyone to see.

※ Acquisition of production count signal is required



Trend Graph(optional)

Graph can display cumulative data of equipment over designated periods of time. It can be used as an analysis tool for visualizing trends and significant precipitating events through graph.

Using SQL Server Reporting Services, graph can be displayed on web pages, e.g., Internet Explorer. In addition, graph can be displayed on multiple terminals simultaneously.

Graph on web pages can be directly exported to Excel where information may be utilized actively and freely.

Vertical bars show daily event ratios. The circle chart shows event ratios within a designated range.

When you use this function, 2012 Express or later is required for SQL Server.

-For server, Windows Server 2008R2(SP3) or later is required.

-For client OS, Windows 7 or later is required.

Operation rate is monitored by an automated data collection function and can be digitally "**visualized**", thereby highlighting important kaizen points for improved awareness and efficiency.



Operating at 100% capacity equals increased sales

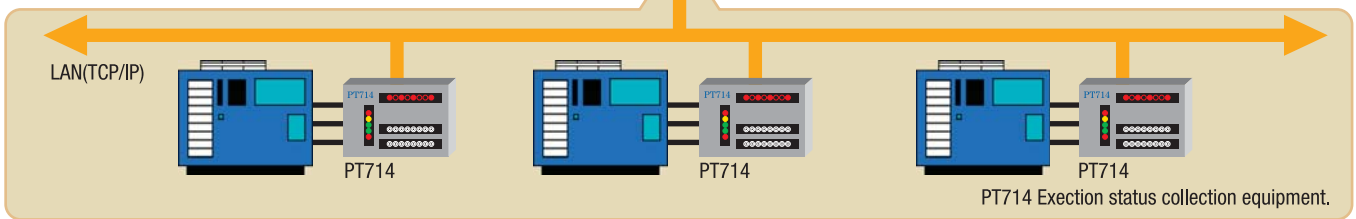
system Composition

Various information is transmitted accurately to the appropriate persons and places
Real-time equipment operation management system

P@t net

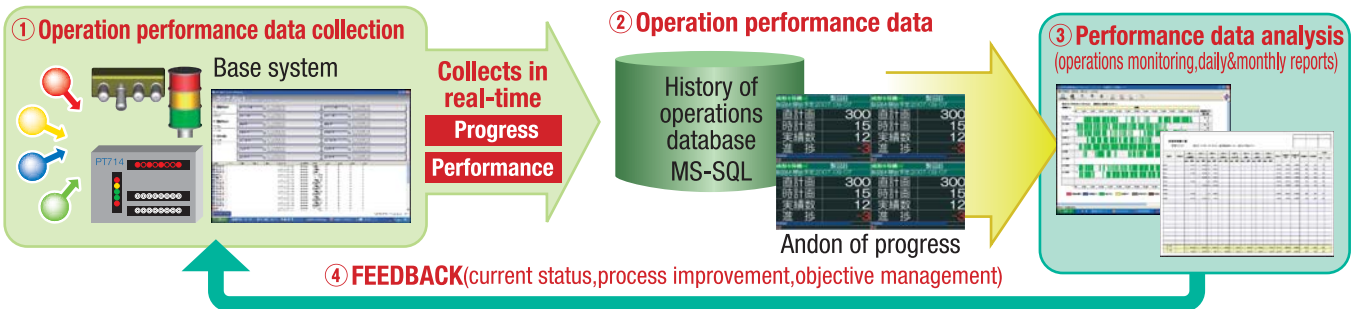


A max of 128 sites(monitored pieces of equipment)can be connected simultaneously. Automated functions eg.E-mails,etc. A max of 8 operation status items can be monitored at any given time. Operating hours-Production amount Planning time-Abnormalities detection



Software outline

Basic software outline of equipment operation management system



Full customer service from installation to after-care

Fully integrated service including setup and installation,operational guidance,and maintenance is provided by our professional engineers. Maintenance contract is provided separately.Please send you enquiries to our sales representatives.

P@t net development manufacture
Kyoritsu System Machine LTD.

Sales Division

Kyoritsu The First Building 1195-1,
 Takamori Isehara-City Kanagawa 259-1114 Japan
 TEL;81 463 91 7298 FAX;81 463 94 4408
<http://www.kyoritsu-s.co.jp/eng/>

SALES AGENT